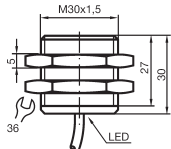


Inductive Sensors

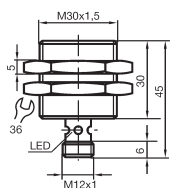
Inductive proximity sensors are the preferred choice for the majority of applications requiring accurate, non-contact detection of metallic objects up to 100 m distance in machinery or automation equipment. Standard features are: smooth or threaded stainless housings, polarity reversal and short-circuit protected, LED status indication, connection styles include M8, M12 or terminal connection models, models with PVC, PUR or silicon cable, outputs in 2-, 3-, 4-wire DC, AC, NAMUR, and AS-Interface versions

Application features: analog output models with 4-20 mA output signal, integrated speed monitor with up to 100 Hz operation, pressure resistant cylinder sensors for up to 500 bar, sensors approved for gas and dust Ex zones, models with stainless steel sensing face, protective class up to IP68/ IP69k (submersible/ high pressure water jet resistant), weld resistant designs with PTFE-coated surface, reduction factor of 1, all metals sensed at same distance, exclusive ferrous and non-ferrous detection models, safety function sensors, extended temperature range: -40 °C up to +250 °C

NBB15-30GM30-E2



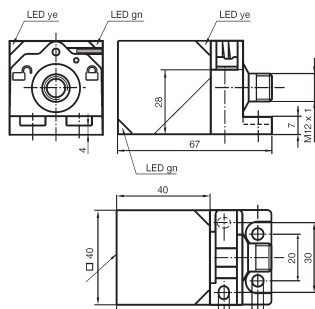
NBB15-30GM30-E2-V1



Technical parameters	NBB15-30GM30-E2	NBB15-30GM30-E2-V1
Switch. element function	PNP	PNP
Rated operating distance	15 mm	15 mm
Installation	embeddable	embeddable
Operating voltage U_b	10 - 30 V	10 - 30 V
Switching frequency	0 - 200 Hz	0 - 200 Hz
Operating current I_L	0 - 100 mA	0 - 100 mA
Indication of the sw. state	all direction LED, yellow	Multihole-LED, yellow
Connection type	2 m, PVC cable	V1 connector
Housing material/ Sensing face	brass, nickel-plated / PBT	brass, nickel-plated /PBT
Protection degree	IP67	IP67
Ambient temperature	-25°C up to +70°C	-25°C up to +70°C

Part No.	Ord.No.
o NBB15-30GM30-E2	70759
o NBB15-30GM30-E2-V1	70760

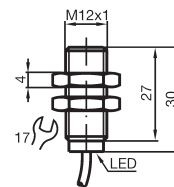
NBB20-L2-A2-V1-3G-3D



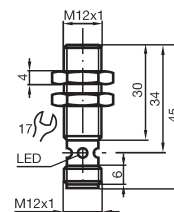
Technical parameters	NBB20-L2-A2-V1-3G-3D
Switching element function	PNP
Switching element distance	20 mm
Installation	embeddable
Operating voltage U_b	10 - 30 V
Switching frequency	0 - 150 Hz
Operating current I_L	0 - 200 mA
Indication of the operating voltage/ switching state	LED, green/LED, yellow
Connection type	V1 connector
Housing material/Sensing face	PA-GF35/PA-GF35
Protection degree	IP69K
Ambient temperature	-25°C up to +85°C

Part No.	Ord.No.
o NBB20-L2-A2-V1-3G-3D	70761

NBB4-12GM30-E2



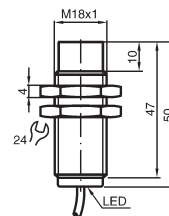
NBB4-12GM30-E2-V1



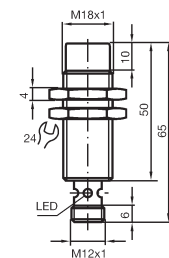
Technical parameters	NBB4-12GM30-E2	NBB4-12GM30-E2-V1
Switch. element function	PNP	PNP
Switch. element distance	4 mm	4 mm
Installation	embeddable	embeddable
Operating voltage U_b	10 - 30 V	10 - 30 V
Switching frequency	0 - 1000 Hz	0 - 1000 Hz
Operating current I_L	0 - 150 mA	0 - 150 mA
Indication of the sw. state	Multihole-LED, yellow	Multihole-LED, yellow
Connection type	2 m, PVC cable	V1 connector
Housing material/ Sensing face	brass, nickel-plated / PBT	brass, nickel-plated / PBTt
Protection degree	IP67	IP67
Ambient temperature	-25°C up to +70°C	-25°C up to +70°C

Part No.	Ord.No.
o NBB4-12GM30-E2	70762
o NBB4-12GM30-E2-V1	70763

NBN12-18GM50-E2



NBN12-18GM50-E2-V1



Technical parameters	NBN12-18GM50-E2	NBN12-18GM50-E2-V1
Switch. element function	PNP	PNP
Switch. element distance	12 mm	12 mm
Installation	not embeddable	not embeddable
Operating voltage U_b	10 - 30 V	10 - 30 V
Switching frequency	0 - 200 Hz	0 - 200 Hz
Operating current I_L	0 - 200 mA	0 - 200 mA
Indication of the sw. state	all direction LED, yellow	Multihole-LED, yellow
Connection type	2 m, PVC cable	V1 connector
Housing material /Sensing face	brass, nickel-plated / PBT	brass, nickel-plated / PBTt
Protection degree	IP67	IP67
Ambient temperature	-25°C up to +70°C	-25°C up to +70°C

Part No.	Ord.No.
o NBN12-18GM50-E2	70764
o NBN12-18GM50-E2-V1	70765