

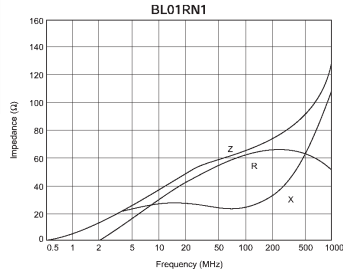
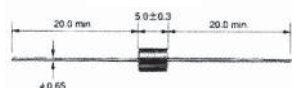
RFI Filters - leaded

BL Series

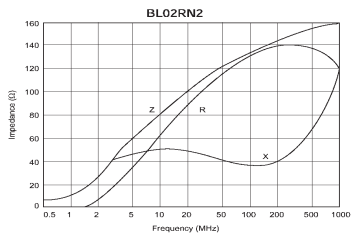
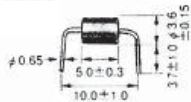


These ferrite bead inductors are useful because they can suppress noise only by inserting them in circuit lines. They are suitable for the circuit with unstable ground because they do not need the connection to ground line. Ferrite core filters from BL series are inductive, 2-terminal and are connected in series with protected equipments.

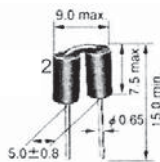
BL01 RN1-A62



BL01 RN1-A62B1



BL02 RN2-R62



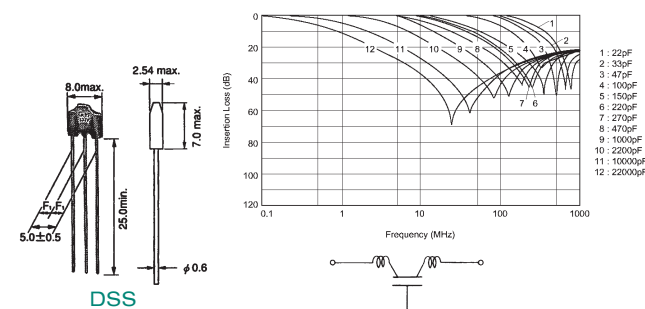
Part No.	Description
BL01RN1A1F1J	EMI filter 100MHz 70R 7A 2-pin axial
BL01RN1A2A2B	EMI filter 100MHz 70R 7A 2-pin axial
BL02RN2R1N1A1	EMI filter 100MHz 130R 7A 2-pin radial

Part No.	Ord.No.
S BL01RN1A1F1J	38271
S BL01RN1A2A2B	40413
S BL02RN2R1N1A1	38272

DSS Series



DSS series is compact, high performance lead type EMI suppression filters which can be mounted 2.54mm pitch. Its three-terminal structure enables nice high frequency performance.



Part No.	Description
DSS 6NZ 82A 103 Q55B	EMI filter 10000pF/100V 6A 3pin radial
DSS 6NF 31C 223 Q55B	EMI filter 22000pF/16V 6A 3pin radial
DSS 6NC 52A 102 Q55B	EMI filter 1000pF/100V 6A 3pin radial

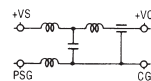
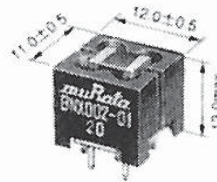
Part No.	Ord.No.
S DSS 6NZ 82A 103 Q55B	38276
S DSS 6NF 31C 223 Q55B	40264
S DSS 6NC 52A 102 Q55B	40265

BNX Series

muRata



BNX 002/01



The "EMIFIL" BNX002 incorporates a through-type barrier layer capacitor and a four-terminal capacitor which are interconnected. This combination enables the BNX002 to achieve a significantly large insertion loss throughout the extremely wide frequency range of 0.5MHz to 1GHz which covers the AM and UHF-TV broadcast frequency bands.

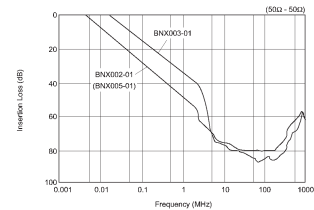
The filter is extremely compact since only one filter block is needed to completely eliminate noise from both the positive and negative lines.

There are no connection routes in the current circuits, thus ensuring highly reliable performance.

Both the input/output terminals and the grounding terminal are aligned in the same direction, permitting fast and easy installation on any type of P.C. board.

Applications:

Noise elimination from DC power sources in a variety of switching power sources, engine control units, digital equipment and computer terminals.



Part No.	Description
BNX 002-01	EMI filter 1MHz-1GHz 10A/50V 4pin radial

Part No.	Ord.No.
S BNX 002-01	38270

Table of Product Numbers:

muRata

Old Product Number	Current Product Number
BLM Series	
BLM 21 A 601 S PT	BLM 21 AJ 601 SN1D
BLM 21 P 300 S PT	BLM 21 PG 300 SN1D
BLM 31 A 700 S PT	BLM 31 AF 700 SN1D
BLM 31 P 500 S PT	BLM 31 PG 500 SN1D
BLM 41 A 151 S PT	BLM 41 AF 151 SN1L
BLM 41 P 750 S PT	BLM 41 PG 750 SN1L
NFM Series	
NFM 41 P11 C 204 T1	NFM 41 PC 204 F1H3L
NFM 40 R11 C 221 T1	NFM 3D CC 221 R1H3L
NFM 41 R11 C 222 T1	NFM 41 CC 222 R2A3L
BL Series	
BL 01 RN1-A62	BL 01 RN 1A 1F1J
BL 01 RN1-A62B1	BL 01 RN 1A 2A2B
BL 02 RN2-R62	BL 02 RN 2R 1N1A
DSS Series	
DSS 306-55 FZ 103 N100	DSS 6NZ 82A 103 Q55B
DSS 306-55 F 223 Z16 PBF	DSS 6NF 31C 223 Q55B
DSS 306-55 Y5S 102 M100	DSS 6NC 52A 102 Q55B

Do you need technical support?

www.soselectronic.com
technik@soselectronic.com

- engineering characteristic
- data sheets
- replacements...